



PC5043TN-E



4.3" TFT Color LCD with Pluggable I/O Modules



PC5070TN
7" TFT Color LCD



PC5070TN-E

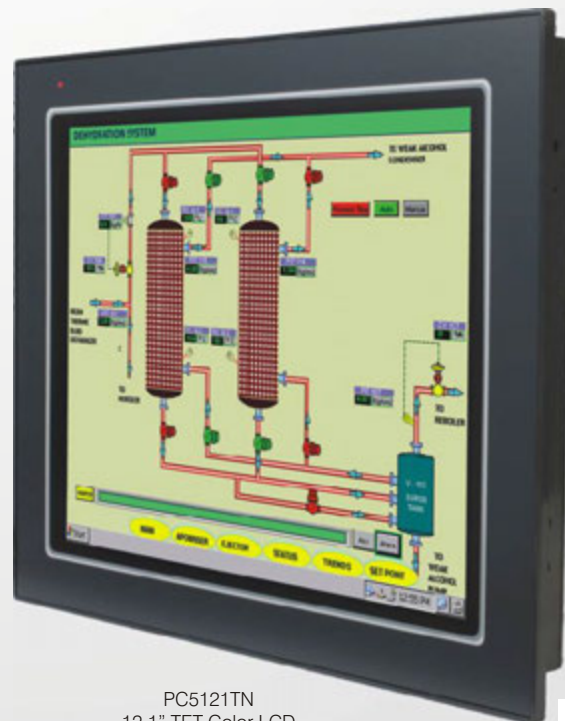


7" TFT Color LCD with Pluggable I/O Modules

▶ WinCE based FlexiPanels® - HMI OR HMI with Pluggable I/O

Salient Features :

- ▶ 4.3" WQVGA (480x272 pixels), 7" WVGA (800x480 pixels), 12.1" SVGA (800x600 pixels) TFT Color Touch screen Graphical Display
- ▶ Support for Windows CE runtime software
- ▶ Support for 65K color, Built-in RTC
- ▶ Dual Port communication supported
- ▶ Serial Communication Ports:
Serial ports to connect PLC at RS232 / 485 levels
- ▶ USB Ports:
One USB device port
One USB host port: Can be used for Extended Memory / USB Keyboard / USB Mouse
- ▶ Ethernet Port:
One Ethernet port (10/100 Mbps)
- ▶ Memory:
Up-to 128 MB RAM
Up-to 128 MB flash memory
- ▶ Integrated / Pluggable Digital and Analog Inputs and Outputs
- ▶ Digital Outputs - OC / Relays
- ▶ Analog Inputs for RTD, mV, mA, Thermocouple, 0 to 5 VDC, 0 to 10 VDC, -10 to +10VDC
- ▶ Analog Outputs are 4-20 mA / 0-10 VDC
- ▶ Support for Quadrature inputs and PWM output
- ▶ IP66 design. CE / UL approval. RoHS compliant



PC5121TN
12.1" TFT Color LCD

